



Important Notes

Battery Life

The MiniTemp Blue uses a replaceable 1/2 AA sized lithium battery. It can be easily replaced by removing the 4 screws from the bottom of the enclosure to access the blue logger. The logger simply pulls apart into 2 halves to access the battery, be careful when opening the cube as there are wires that connect the 2 halves together inside.

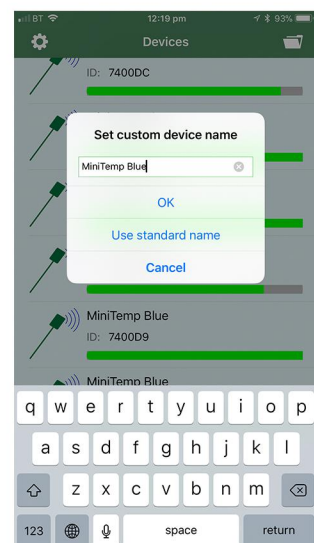
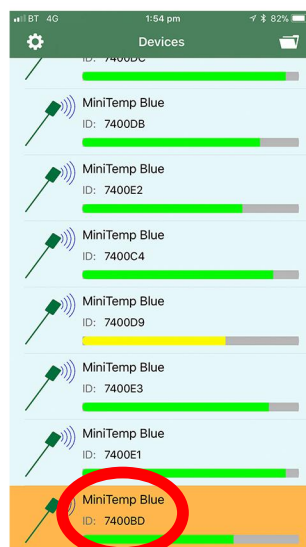
As with every battery operated product, the battery life will vary depending on its usage. The MiniTemp Blue is designed to last for around 6 months with average usage. When using the online view, the default measurement interval is 1 second due to how the logger records information, this cannot be changed. Using the online view for extended periods of time will degrade battery life more quickly.

When setting the logger to record internally, a shorter interval will degrade the battery and internal memory quickly, a longer measurement interval will preserve battery life and internal memory. See page 2 for more information.

Identifying and Renaming Loggers

Each logger has its own unique ID code to help identify it amongst a list of the same loggers. It can be found on the silver sticker on the side of the logger.

In the ML Sensing app, it is possible to rename loggers to help with easy identification. Simply locate the logger you wish to rename using the unique ID code, press and hold the logger details with your finger and enter the desired name.



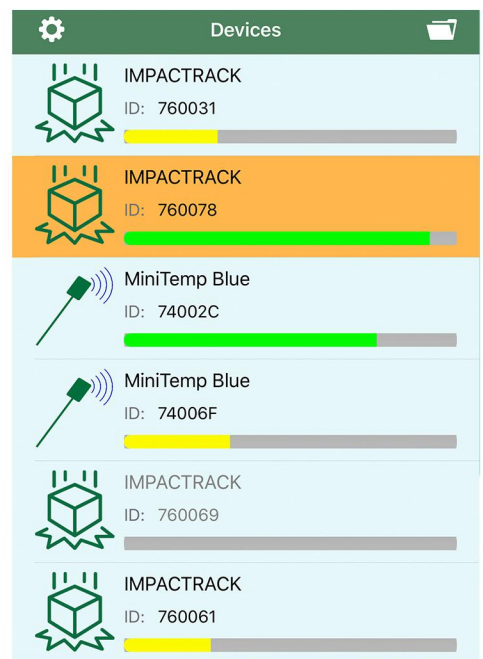
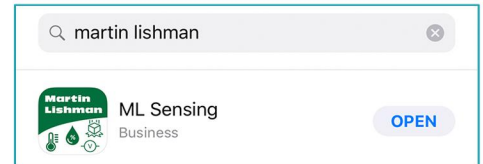


Delivery contents


Data logger (battery included)

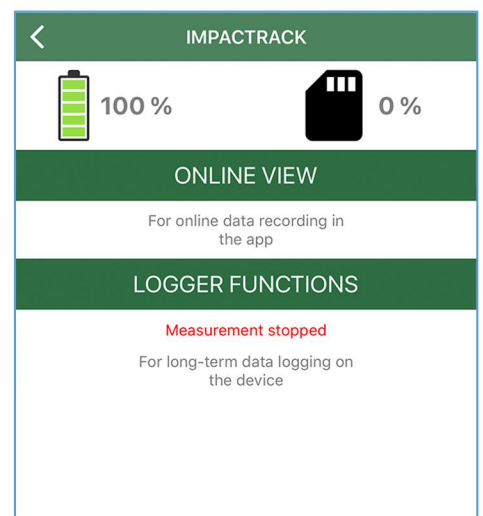
First start-up

- Install the free [ML Sensing app](#) from the App Store (Requirements: iOS 7 or later, device with Bluetooth 4.0)
- Start the App
- Distance to the logger should not exceed 10 meters
- Signal strength is indicated by the length and colour of the status bar:
 - Green=excellent
 - Yellow=sufficient
 - Grey=out of reach
- Select the logger ID from the list of devices (the ID is printed on the unit)



Online view & Logger functions

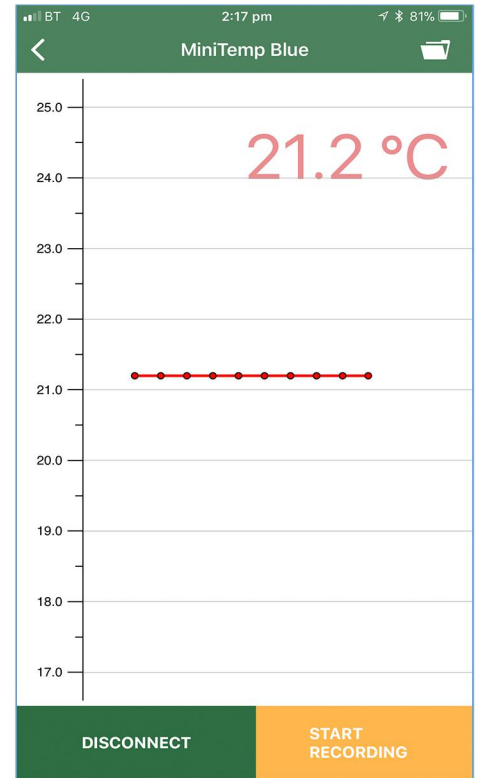
- After connecting please choose between the online view or the logger functions
- The online view enables the real time data view and data recording in the app
- In logger functions you can control and start the long-term recording on the logger
- Pressing  takes you back to the previous view





Online view & recording

- For recording press the button „START RECORDING“ (the button starts flashing)
- ! *If the app is running in the background it may be canceled by the iOS operating system due to insufficient resources. This will stop the recording.*
- To stop the recording press the button “STOP RECORDING” (a name field will appear if the recording was succesful)
- Pressing the “DISCONNECT” button disconnects the logger and takes you back to the list of devices



Logger functions

- Here you can select the required measuring interval and enter a name for the record
- The measuring interval can be set from 1s to 24h (e.g. 10 minutes will record a value every 10 minutes)
- ! *The shorter the interval the higher the battery consumption!*
- Beneath you see:
 - the current battery and memory status
 - whether a measurement is in progress
 - the currently measured values and thresholds
- In “ADVANCED OPTIONS” you can set:
 - a name for the recording and the measuring interval
 - the start delay of a recording (1s to 6 months)
 - whether acceleration and/or temperature should be recorded
 - individual thresholds for triggering a recording (the recording starts when the lower or upper threshold is being exceeded)

The screenshot shows the 'Logger control' app interface. The status bar shows 'BT', '12:49 pm', and '93%' battery. The app title 'Logger control' is centered. Below the title, there are input fields for 'Interval:' (set to '00:00:01') and 'Name:' (set to 'test'). Below these fields, it says 'Measurement stopped' in red. Further down, it shows 'Battery: 100 %' and 'Memory: 0 %'. At the bottom, there are three buttons: 'START MEASUREMENT' (green), 'READ LOGGER DATA' (green), and 'ADVANCED OPTIONS' (orange).




Start a measurement

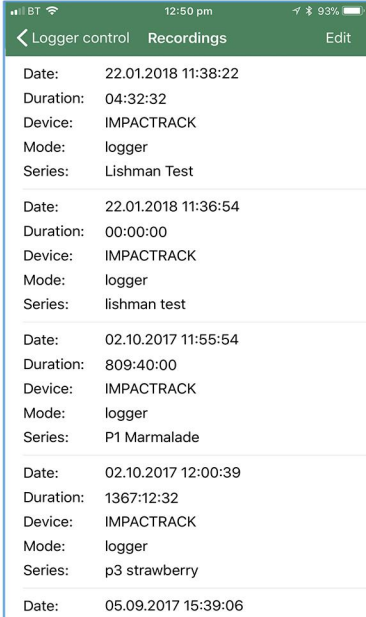
- To start a new recording on the logger press the button “START MEASUREMENT”
- ! *A new recording deletes the previous record!*
- Please transfer the logger data to the app first.
- For further measurements press the button “RESTART MEASUREMENT”
- After starting a new recording the logger can remain in its place and the app can be closed

Reading logger data

- By pressing the button “READ LOGGER DATA” the current record will be transferred from the logger to the app
- ! *This will stop the current recording!*
- The transferred data will be automatically stored in the record library

Record library

- By pressing the  button the library will be opened
- The mode “logger” or “online” indicates whether the recording was made in the online view or on the logger
- Select a recording from the list to open the data view
- To delete a recording swipe it to the left (alternatively you can press the button “Edit”)



Date	Duration	Device	Mode	Series
22.01.2018 11:38:22	04:32:32	IMPACTRACK	logger	Lishman Test
22.01.2018 11:36:54	00:00:00	IMPACTRACK	logger	lishman test
02.10.2017 11:55:54	809:40:00	IMPACTRACK	logger	P1 Marmalade
02.10.2017 12:00:39	1367:12:32	IMPACTRACK	logger	p3 strawberry
05.09.2017 15:39:06				



Data view

- By pressing the buttons "GRAPH" or "LIST" you can switch between the graph or list view



Graph view

- Pressing the buttons will zoom in or out
- To move along the timeline you can use the slider
- To see more detailed values touch on the graph

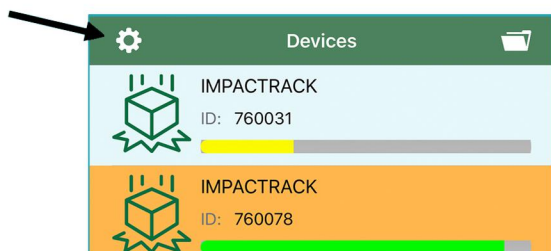
List view

- In this view the recorded data is displayed chronologically
- By pressing the button the data will be sent via email in CSV file format to be further processed (e.g. in Excel)

Date	Temperature
29.05.2018 14:22:35	21.1 °C
29.05.2018 14:22:36	21.1 °C
29.05.2018 14:22:37	21.1 °C
29.05.2018 14:22:38	21.1 °C
29.05.2018 14:22:39	21.1 °C
29.05.2018 14:22:40	21.1 °C
29.05.2018 14:22:41	21.1 °C
29.05.2018 14:22:42	21.1 °C
29.05.2018 14:22:43	21.2 °C
29.05.2018 14:22:44	21.1 °C
29.05.2018 14:22:45	21.1 °C
29.05.2018 14:22:46	21.1 °C
29.05.2018 14:22:47	21.1 °C
29.05.2018 14:22:48	21.1 °C
29.05.2018 14:22:49	21.1 °C
29.05.2018 14:22:50	21.1 °C
29.05.2018 14:22:51	21.1 °C
29.05.2018 14:22:52	21.1 °C
29.05.2018 14:22:53	21.1 °C
29.05.2018 14:22:54	21.1 °C
29.05.2018 14:22:55	21.1 °C
29.05.2018 14:22:56	21.1 °C
29.05.2018 14:22:57	21.1 °C
29.05.2018 14:22:58	21.1 °C
29.05.2018 14:22:59	21.1 °C
29.05.2018 14:23:00	21.1 °C
29.05.2018 14:23:01	21.1 °C
29.05.2018 14:23:02	21.1 °C
29.05.2018 14:23:03	21.1 °C

Hint

- To change name press on a logger until a name field appears
- Pressing the button enables you to enter an email address for the data transfer
- Here you can also set whether you want to go straight to the online view or to the logger functions after connecting





Technical specifications

Range	Temperature: -25...+75°C
Accuracy	Temperature: ±0.5°C
Resolution	Temperature: 0.1°C
Battery	Replaceable (Lithium ½ AA 3,6V / 1Ah) Approx. 6 months battery life
Measuring interval	1s...24 h adjustable
Start delay	1s...6 months adjustable
Memory	max. 32,000 measured values
Data transfer	Via Bluetooth 4.0 LE
Max. distance	10 meters
Visualisation / Configuration	Via iOS & Android App
Data format	EXCEL-compatible (CSV)
Size / Weight	31 x 31 x 31 mm / ca. 26 g
Protection class	IP54 (IP65 optional)



Disposal

Electronic items must not be put in the bin. Items can be brought back to the dealer or manufacturer directly and will then be recycled.

