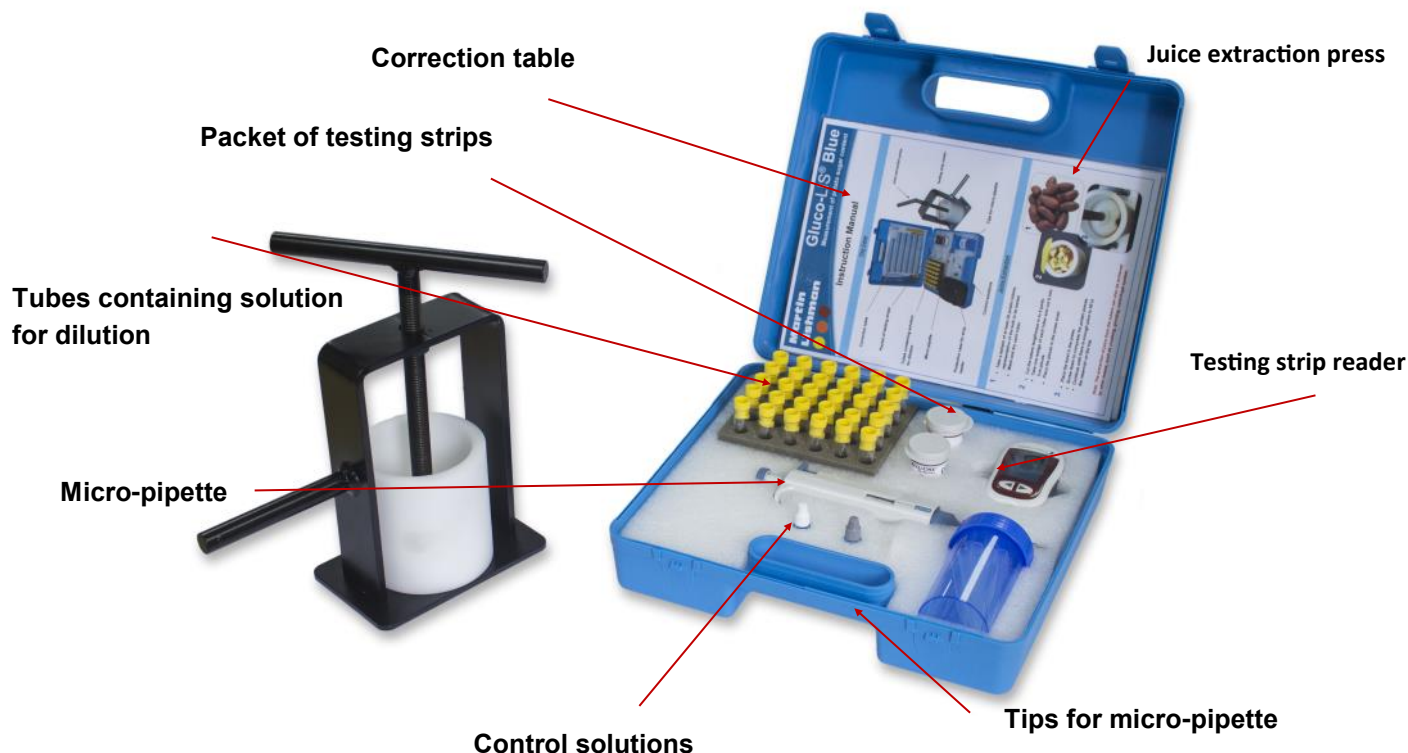




Instruction Manual

The Case



Juice Extraction

- 1**
 - Take a sample of at least 20 potato tubers, representative of the bulk to be tested.
 - Wash and dry each tuber.
- 2**
 - Cut the tubers lengthways in to 8 parts.
 - Take one wedge of each tuber and cut it into 1cm pieces.
 - Place the pieces in the press bowl.
- 3**
 - Place the bowl in the press.
 - Screw down to compress the potato pieces.
 - Continue until there is enough juice to fill in the reservoir on the top.



Note: The extraction of juice from the tubers can also be achieved by other means, such as crushing, grinding, centrifugal system.

Juice Dilution

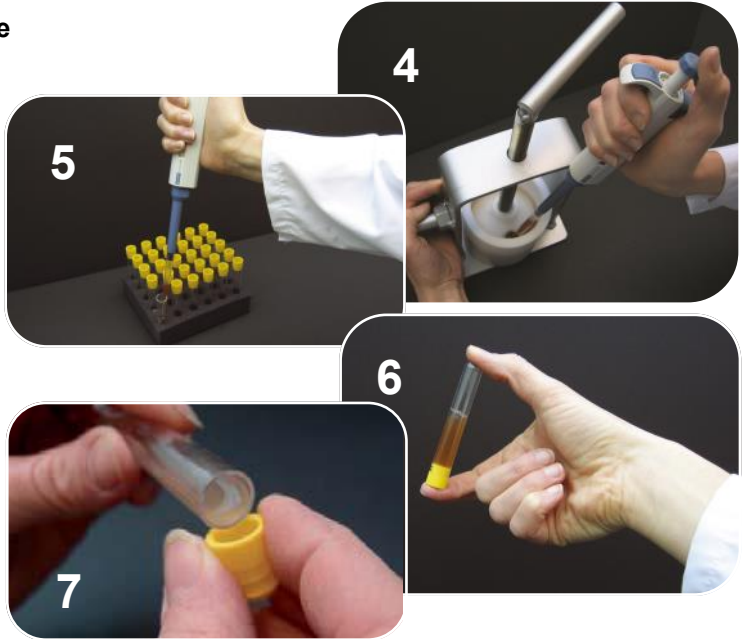
- 4** Using the micro-pipette, remove 1ml of the juice from the reservoir, avoiding any impurities.

Caution: Use a clean tip for each new tuber sample.

- 5** Dispense the juice sample in to one of the tubes containing the solution for dilution.

- 6** Turn the tube up side down several times to homogenize the solution.

- 7** Pour a small amount of the solution in to the yellow cap.



Glucose Measurement

Important: Read the complete user manual for the strip monitor before testing

- 8**
- Insert one strip into the monitor.
- Caution: Avoid touching the reactive (yellow) tip of the strip with your fingers.*

- Check the verification code of the strip.

- 9** When the test strip and flashing droplet symbols appear on the screen, dip only the front edge of the yellow tip into the solution in the cap.

- 10**
- The reading is now in progress.
 - The Glucose value in mg/dl will appear in approximately 5 seconds.
 - Note the value (G).
 - Repeat the operation 3 times for each sample (G1, G2, G3).



Calculation of Results

$$\text{Average measurement result (mg/dl)} = \frac{G1 + G2 + G3}{3} \quad \leftarrow \text{Number of strips}$$

Use correction table to look up the Glucose in g/l in the juice

$$\text{Glucose in the juice (\%)} = \frac{\text{g/l Glucose}}{10}$$

$$\text{Glucose \% fresh weight} = \text{Glucose in the juice (\%)} \times \frac{(100 - DM^*)}{100}$$

* DM : Dry matter content of the tubers (%)

Correction table

Martin Lishman

Tel: +44 (0) 1778 426600

Fax: +44 (0) 1778 426555

E-mail: sales@martinlishman.com

www.martinlishman.com